



GOLDEN STATE INSTRUMENT CO.

24 VOLT 12.5 AMP THERMAL FUSED CCTV CAMERA POWER SUPPLY

GS-2408HTPS

UL APPROVED COMPONENTS

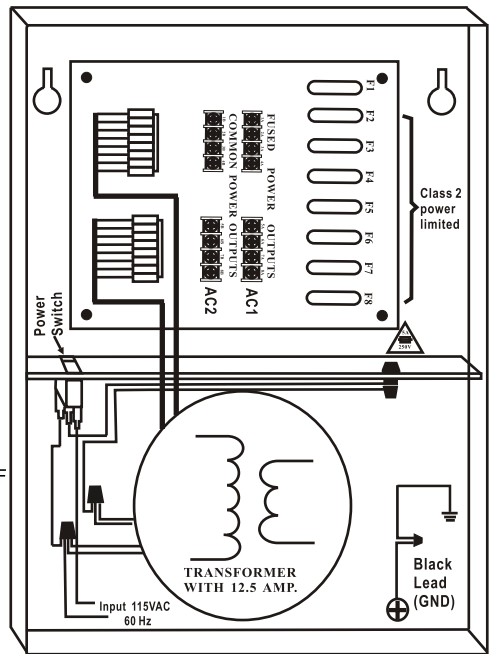
INPUT: 115VAC 60 Hz, 300VA
OUTPUT: 24VAC @ 1.6 AMP PER OUTPUT.
DO NOT EXCEED 12.5 AMP TOTAL.

SPECIFICATIONS:

- EIGHT (8) 24VAC "ISLAND" OUTPUTS.
- INDIVIDUAL OUTPUTS FUSED AT 1.6 AMP.
- TOTAL POWER SUPPLY CURRENT-12.5AMP.
- PRIMARY POWER INPUT IS 115VAC 60HZ.
- POWER(GREEN)LED INDICATOR.
- CONVENIENT POWER SWITCH.
- DESIGN SIMPLIFIES INSTALLATION.

INSTALLATION:

- MOUNT BOX SECURELY TO WALL.
- SWITCH SHOULD BE IN THE OFF POSITION.
- CONNECT 115 VAC TO THE WHITE AND BLACK LEADS OF BOTH TRANSFORMERS.
- CONNECT EACH CAMERA TO ONE SET OF FUSED & COMMON TERMINALS
- MOVE SWITCH TO THE ON POSITION.
- A GREEN LED INDICATES POWER IS PRESENT.
- METER ALL VOLTAGE OUTPUTS TO ENSURE PROPER VOLTAGE TO ALL CAMERAS OR OTHER CCTV EQUIPMENT.
- ENCLOSURE DIMENSIONS ARE:11.1" × 8.5" × 3.7".



CAUTION

INSTALLATION OF THIS UNIT SHOULD BE BY QUALIFIED PERSONNEL.
LOCAL CODES AND NATIONAL ELECTRICAL CODES SHOULD BE OBSERVED.
INSTALL IN A MOISTURE FREE LOCATION TO REDUCE HAZARD OF SHOCK OR FIRE.
DO NOT CONNECT LOADS DIRECTLY TO TRANSFORMERS.
USE ONLY FUSED OUTPUTS TO POWER EQUIPMENT.
RECOMMENDED CURRENT LOAD PER OUTPUT IS 1.6 AMP.
REPLACE FUSES WITH SAME TYPE AND RATING 5 AMP @ 250V.