



GOLDEN STATE INSTRUMENT CO.

GS-709 IRHBH

W/Heater & Blower & Infrared Illuminator

CCTV Camera Housing

& 1/3" COLOR DAY/NIGHT CCD CAMERA

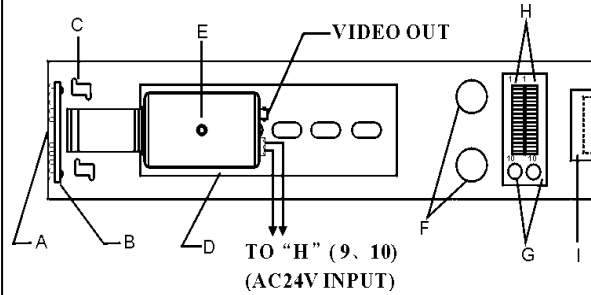
& 2.8-10mm / F1.4 Auto Iris Varifocal Lens

(Sun Shield Included)



- Medium indoor / outdoor enclosures
- Spring assisted rear opening lid
- Aluminum construction
- Dimension inside to accommodate Camera; lens & connector
- Applications for the camera include operating at night and a transmission range of approximately to 120m (180 ft) indoor & 40m (120 ft) outdoors.
- Temperature reduced by 3 °C-5°C with sun shield
- 2 UL cable entry grommets on bottom of enclosure with maximum wire diameter of 1.3cm
- Auto ray-switcher of 20Lux can operate at night or in a weak light condition.
- IR LED transmission angle: 30°.
- Use high-speed IR LED (70 pcs / Φ5mm), lifetime approx 10, 000 hours.

Wiring Diagram

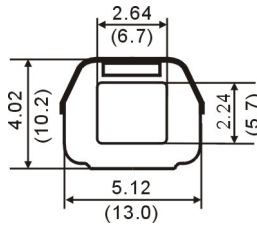


- A. Window
- B. Infrared Illuminator (Included insulation)
- C. Heater
- D. Camera mounting plate
- E. 1/3" COLOR DAY/NIGHT CCD CAMERA & 2.8-10mm Auto Iris Varifocal Lens
- F. Wire entry
- G. Thermostats
- H. Terminal strip
- I. Blower

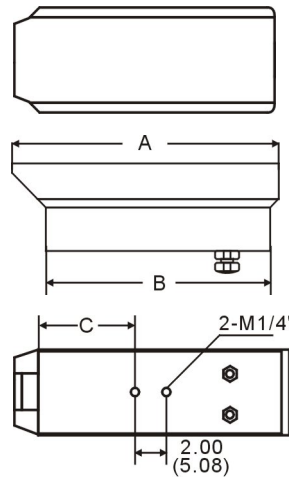
TERMINAL STRIP WIRING

1. Camera Power(+)
2. Camera Power(-)
3. Lens Com
4. Focus
5. Zoom
6. Iris
7. Not used
8. Ground
9. Enclosure Power
10. Enclosure Power } 24 VAC

Dimension Drawing



enclosure dimension	GS-709 IRHBH
A	16.34"(41.5cm)
B	12.83"(32.6cm)
C	5.33"(13.55cm)



Note: in (), the unit is cm, other is inch

Specifications:

Model	GS-709 IRHBH
Input Voltage	24 VAC / 1500mA (Max.)
Power	IR LED: 10W Camera: 3W Heater: 20W Blower: 2.3W
TV System	NTSC
Image Sensor	1/3-inch COLOR DAY/NIGHT CCD Image Sensor
Minimum Illumination	0.028 Lux /F1.4 5600 °K
Lens	2.8-10mm Auto Iris Varifocal Lens
Resolution	480 TV lines (Max.)
Video Output	1.0Vp-p composite video @ 75 ohm
Construction	Aluminum
Viewing Window	2.13"(53mm)
Max. Size Camera & Lens	8.5"×3.54"×2.85" (215.9×89.91×72.39mm)
Heater & Blower Activates	ON: 50°F±9°F (10°C±5°C) OFF: 68°F (20°C)
Blower Activates	ON: 95°F±9°F (35°C±5°C) OFF: 72°F (22°C)
Weight - Camera Housing	3.74 lbs (1.7 kg)

THIS PACKAGE INCLUDES:

- 1 Housing with heater, blower and sun shield
- 1 1/3" COLOR DAY / NIGHT CCD CAMERA
- 1 2.8-10mm / F1.4 Auto Iris Varifocal Lens
- 2 Cord grip
- 2 Screws (1/4-20 X 5/8") for housing to bracket
- 1 Screw (1/4-20 X 3/8") for camera
- 1 Mounting Bracket (Housing only)
- 3 Screws for bracket to wall bracket
- 3 Plastic anchors

14256 Doolittle Drive-San Leandro, CA 94577-1-800-227-2330-Fax(510)352-5988

Website: www.goldenstateinst.com E-mail: gsi@goldenstateinst.com